



# HT630

## Rugged Compact



A robust, compact portable data collection terminal to meet your demands in today's supply chain- and service management applications. The HT630 is designed for intensive usage and to survive in harsh environments. Its program generator JobGen Plus is a powerful, but easy to use programming tool to have your HT630's up and running in no-time.

Its versatile design with built-in functionalities such as a laser scanner, up to 8,5 MB RAM memory, 8x20 character graphic backlit LCD and 27-key phosphorescent keypad, will satisfy your demands in applications such as inventory control, pick-up and delivery, meter reading, warehouse-/ production management and many others.

The HT630 is a rugged mobile computer, but is nevertheless light-weighted (only approx. 230g) and easy to handle. Its ergonomic design is water resistant (IEC 60529 compliant to IP54) and built to withstand multiple drops from 1.2 meter to a concrete floor.

Unitech offers the HT630 in a complete set including terminal (different configurations), charging- and communication cable, power supply and the renowned JobGen Plus program generator. This Windows-based programming tool offers a "drag and drop" and "point and click" style of programming, requiring little or no programming experience. JobGen Plus comes with 23 ready-to-use sample applications and ensures any system integrates with the HT630 fast and easy!

### Main Features

- Ergonomic Design
- Weighing only 230g
- Backlit display, 128 x 64 pixel
- Illuminating 26 key alphanumeric keypad
- Integrated laser scanner
- IP54 rated against water & dust
- Withstands 1.2 meter drops to concrete
- 512 KB, 2.5, 4.5 and 8.5 MB memory size
- JobGen included

# HT630

## Specifications

### MEMORY / OPERATING SYSTEM

CPU	80 MHz RISK
RAM	512KB / 2.5MB / 4.5MB / 8.5MB
FlashROM	256K with DOS-based system
Keyboard	27-key, alphanumeric rubber keypad (phosphorescent) one laser trigger switch
Display	128x64 pixel
Buzzer	Volume adjustable by software
Real Time Clock	System date and time

### POWER MANAGEMENT

Main battery	120 mA/3.6V rechargeable Lithium-ion battery pack @3.6V, 880 mAH
Backup battery	One rechargeable lithium battery for SRAM memory backup without main power source
Li-ion recharging	2.5 hours in Docking Station or through charging Cable
Operating time	Over 12 hours
Power Input	9VDC/2A via cable

### SCANNER AND BARCODE

Scanner	Laser
Barcode Reading	UPC-A/E , EAN-8/13, Codabar, Code 39, Code 39 full ASCII, Code 128, ITF, China Postal Code, Interleave 2 of 5, EAN 128

### COMMUNICATION

Interface	One EIA RS232C with RJ45 phone jack connector. Supports TX/RX, CTS /RTS , GND, 150K bps
Handshaking	Xon/ Xoff or CTS/RTS
Protocol	None, or Multi-point for multi-drop installation
File Transfer	Built-in Kermit server

### DOCKING STATION

Interface	PT063D-1G	RS232 cradle for point to point communication
	PT063D-3G	Modem Cradle for interface to telephone line
	PT063D-4G	Ethernet Cradle for TCP client connectivity
Battery Charging	Quick charging for typical 2.5 hours	
Power Input	AC/DC adapter @ 9VDC/2A	

### PHYSICAL AND ENVIRONMENTAL

IP Rating	54
DROP TEST	1.2 meters to concrete floor
Dimensions	165 mm (L) x 60 mm (W) x 35mm (H)
Weight approx.	230g with battery pack
Temperature	Operation: -5°C to 50°C Storage: -20°C to 70°C
Humidity	5% to 95% RH non-condensing
Regulatory	CE, FCC

### SOFTWARE PROGRAMMING TOOLS

Program Language	MSC, BorlandC, TurboC
JobGen Plus	A Windows-based program generator
FormCaching	A built-in program generator
DLL	Available for 16/32-bit C++, VB, VFP and Delphi

### PACKAGING

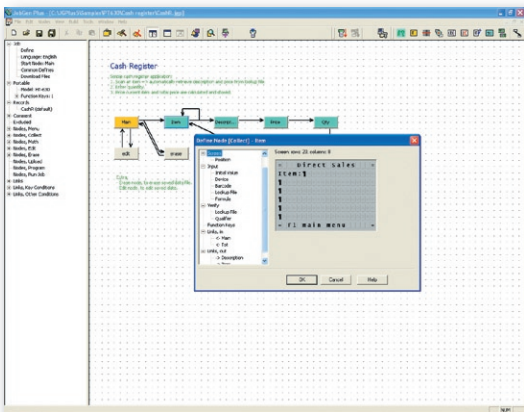
- The HT630 is standard delivered as a complete set containing the following
- Terminal with laser scanner in 512KB, 2.5MB, 4.5MB or 8.5MB RAM memory configuration
  - Charging & Communication cable
  - Li-Ion battery pack
  - Power supply
  - JobGen Plus software
  - Manual

### MODELS

- HT630-AA0AIG HT630 with laser scanner, 512KB distributor Pack
- HT630-AB0AIG HT630 with laser scanner, 2.5MB distributor Pack
- HT630-AC0AIG HT630 with laser scanner, 4.5MB distributor Pack
- HT630-AD0AIG HT630 with laser scanner, 4.5MB distributor Pack

### ACCESSORIES

PT063D-1G	Charging and communication cradle
PT063D-3G	Modem Cradle
PT063D-4G	Ethernet Cradle
PT027	Clip-on griddle holster
4000-201461	Shoulder strap for PT027
1010-600859G	EU Power supply
1010-600860G	UK Power supply
1550600598G	Quick charging & communication cable
1550-200703G	RS232 null modem cable
201709G	Li-Ion batter pack
HHT6XX-CAR-01	Easy car holder



HT630-06V3

